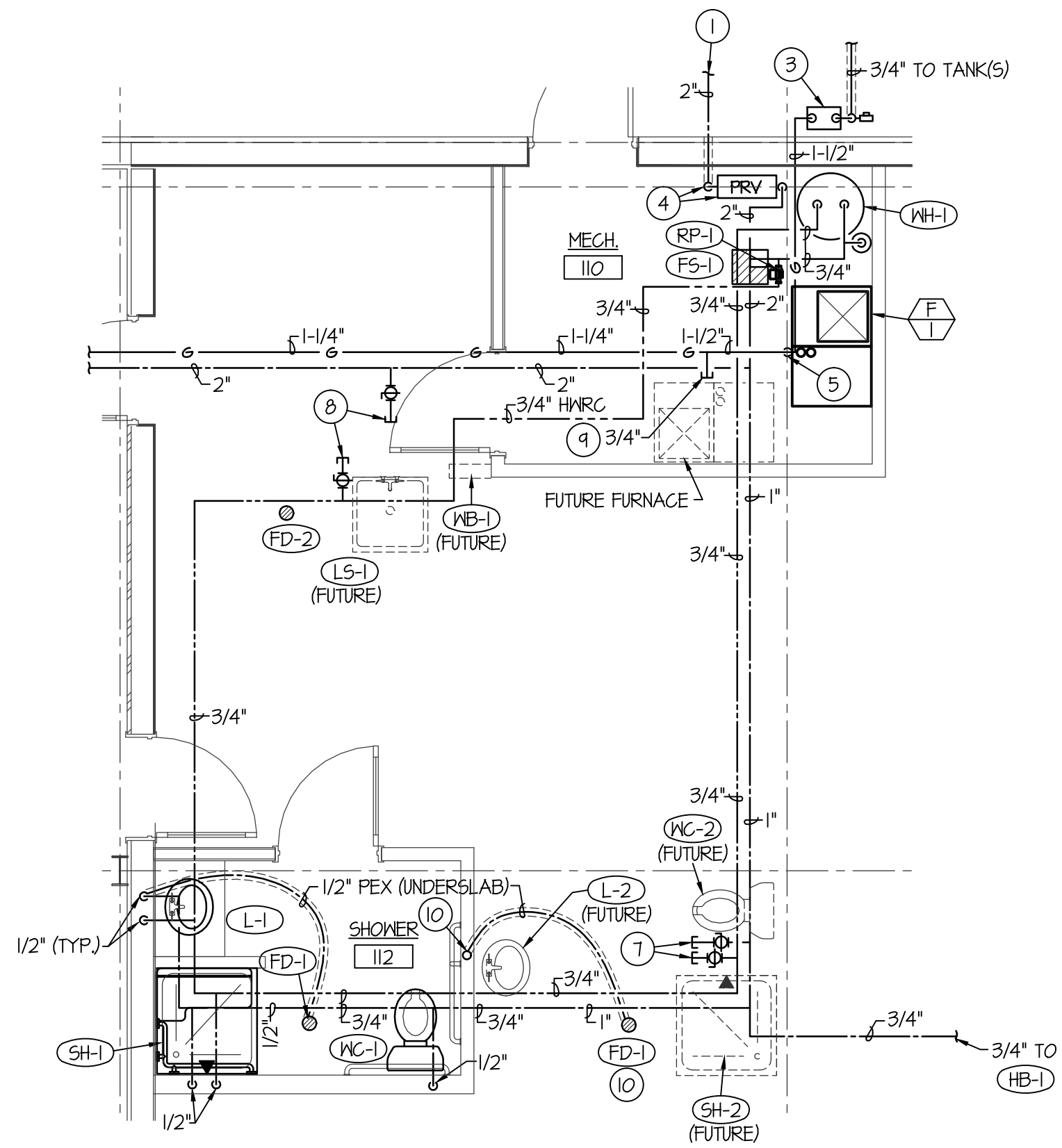


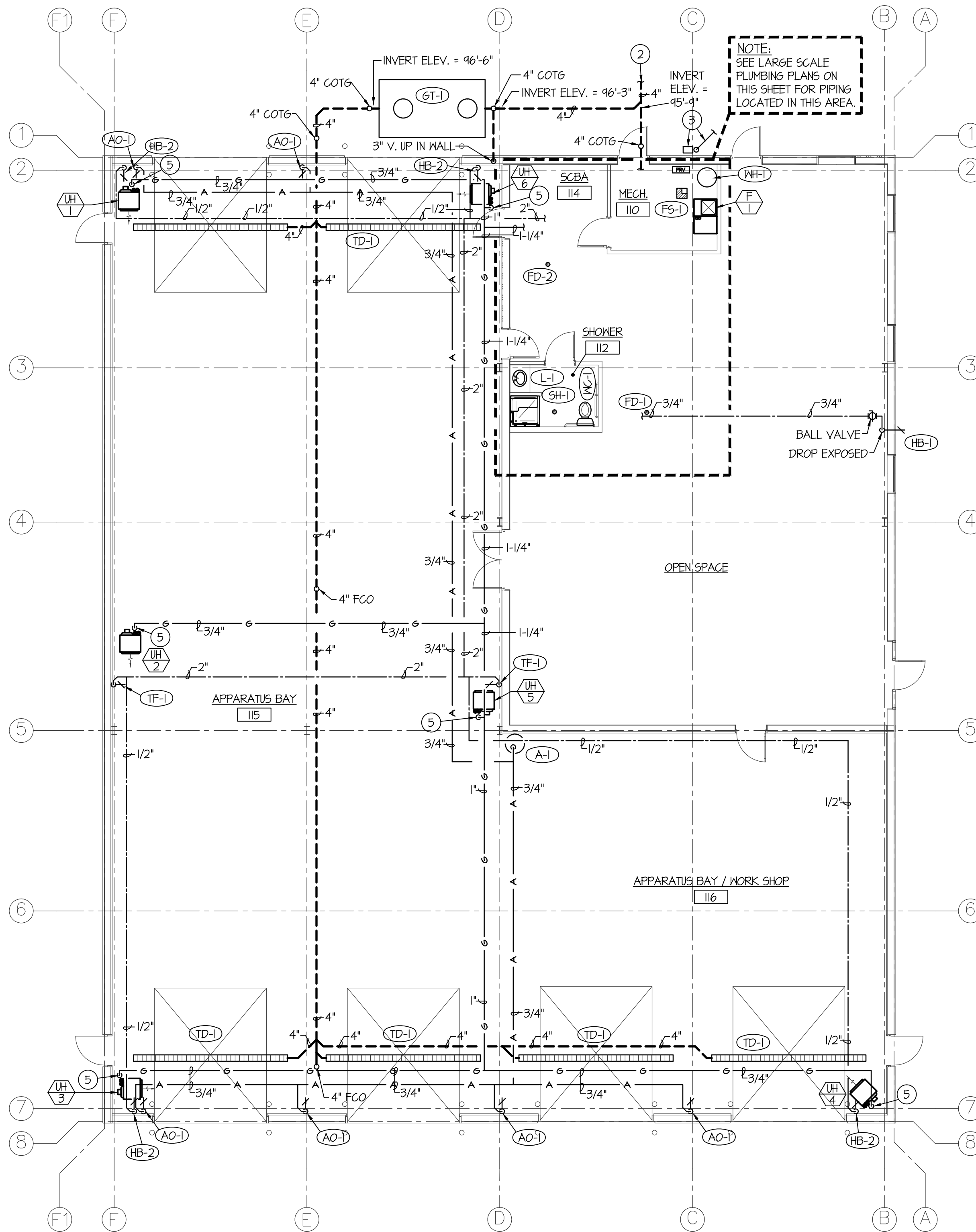
LARGE SCALE WASTE & VENT PIPING FLOOR PLAN

SCALE: 1/4" = 1'-0"



LARGE SCALE WATER & GAS PIPING FLOOR PLAN

SCALE: 1/4" = 1'-0"



BASE BID FLOOR PLAN - PLUMBING

SCALE: 1/8" = 1'-0"



PLAN NOTES:

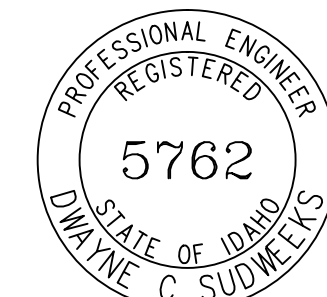
- 1 SEE CIVIL SITE PLAN FOR CONTINUATION OF 2" DOMESTIC CW MAIN.
- 2 SEE CIVIL SITE PLAN FOR CONTINUATION OF 4" SANITARY SEWER MAIN CONNECTING TO CITY SEWER.
- 3 2ND STAGE LP GAS REGULATOR SIZED FOR 132,000 BTU'S. SEE CIVIL SITE PLAN FOR LOCATION OF LP GAS TANKS AND CONTINUATION OF 3/4" HIGH PRESSURE LP GAS LINE.
- 4 RISE 2" CW MAIN UP THRU SLAB OF MECHANICAL ROOM FLOOR TO WATER PRESSURE REDUCING STATION. SEE DETAIL ON SHEET P200.
- 5 DROP 3/4" LP GAS LINE DOWN FROM CEILING TO FURNACE / UNIT HEATER BELOW AND CONNECT. INSTALL BALL TYPE SHUT-OFF VALVE, DIRT LEG AND FLEXIBLE CONNECTION. SHEET DETAIL ON SHEET P200.
- 6 ROUGH-IN WASTE PIPING AS SHOWN FOR FUTURE FIXTURE. CAP WASTE AND VENT PIPING 6" ABOVE FLOOR LEVEL.
- 7 INSTALL CAPPED 3/4" CW AND 3/4" HW LINES WITH SHUT-OFF VALVES FOR FUTURE TOILET ROOM / KITCHEN FIXTURES.
- 8 INSTALL CAPPED 1/2" CW AND 1/2" HW LINES WITH SHUT-OFF VALVES FOR FUTURE SINK AND WASHING MACHINE BOX.
- 9 INSTALL CAPPED 3/4" LP GAS LINE AT LOCATION SHOWN FOR FUTURE FURNACE.
- 10 INSTALL 1/2" CW PEX PIPING UNDERSLAB TO SERVE TRAP PRIMER ON FLOOR DRAIN. RISE PIPE UP IN WALL AND LEAVE 24" OF PIPING EXPOSED THRU WALL FOR FUTURE CONNECTION TO TRAP PRIMER ASSEMBLY LOCATED UNDER FUTURE LAVATORY. CAP EXPOSED PIPE AND FILL FLOOR DRAIN WITH MINERAL OIL.

PLUMBING LEGEND

SYMBOL	DESCRIPTION
V	VENT
VTR	VENT THRU ROOF
CO	CLEANOUT
WCO	WALL CLEANOUT
COTG	CLEANOUT TO GRADE
—	PIPE DROP
—	PIPE RISE
—	BALL TYPE ISOLATION VALVE
—	SOIL OR WASTE PIPING
—	VENT LINE PIPING
—	DOMESTIC SOFT COLD WATER
—	DOMESTIC HOT WATER PIPING
—	DOMESTIC HOT WATER RECIRC.

ORIGINAL DRAWING SIGNED BY: DWAYNE C. SUDWEEKS
 DATE ORIGINAL SIGNED: JAN. 15, 2020
 ORIGINAL ON FILE AT ENGINEERED SYSTEMS ASSOCIATES
 1355 EAST CENTER, POCATELLO, IDAHO 83201

Engineered Systems Associates
 1355 EAST CENTER
 POCATELLO, IDAHO 83201
 PHONE: (208) 233-0501
 FAX: (208) 233-0529
 EMAIL: esa@engsystems.com
 ESA JOB NUMBER: 19057



Myers ■ Anderson
 ■ Architecture
 ■ Interior Design
 ■ Landscape Architecture
 101 North Main Street ■ Pocatello, Idaho 83204 ■ Tel. (208) 232-3711 ■ Fax. (208) 232-3762
 849 Front Street, Suite 202 ■ Evanston, Wyoming 82930 ■ Tel. (307) 889-0934

NCRFD NEW FACILITY
CHALLIS, IDAHO

PROJECT:
SHEET TITLE:
BASE BID PLUMBING FLOOR PLAN

CONTRACTOR SHALL VERIFY ALL DIMENSIONS & CONDITIONS SHOWN OR IMPLIED

DRAWING SCALE APPLIES TO 22' X 34' SHEET SIZE

REVISION	DATE

DRAWN BY: SR
 CHECKED BY: DCS
 JOB NUMBER: 18464
 PROJECT DATE: JAN 2020
 SHEET OF
P100